



VERIFY:

Observation-based system for
monitoring and verification of
greenhouse gases

NETWORKING MEETING

Day 2: Land based CO₂

“Alternative methods for inventory verification: opportunities and limits”



HOUSEKEEPING

1. **Rename** yourself adding your affiliation *before* your name
2. Please mute your microphone: if you need to **intervene** or ask **questions**, write in the Chat
3. Keep your **webcam** off – activate it only when speaking
4. Follow up interactions → Google doc:

<https://docs.google.com/document/d/1c9JRQjMHy9OcZigf7mDpQFfIJ3TDnHAhPbtzFdA-73U/edit#>



VERIFY Project



Aim:
Quantify more accurately
C Stocks & fluxes of
CO₂, CH₄, and N₂O
across the EU

How:
Based on independent
observations
and modelling.

Why:
To support the Paris
Climate Agreement

Web site for more details
<http://verify.lsce.ipsl.fr/>



Project Duration:
48 month

Project Funding:
10 ME (2.5
ME/year)

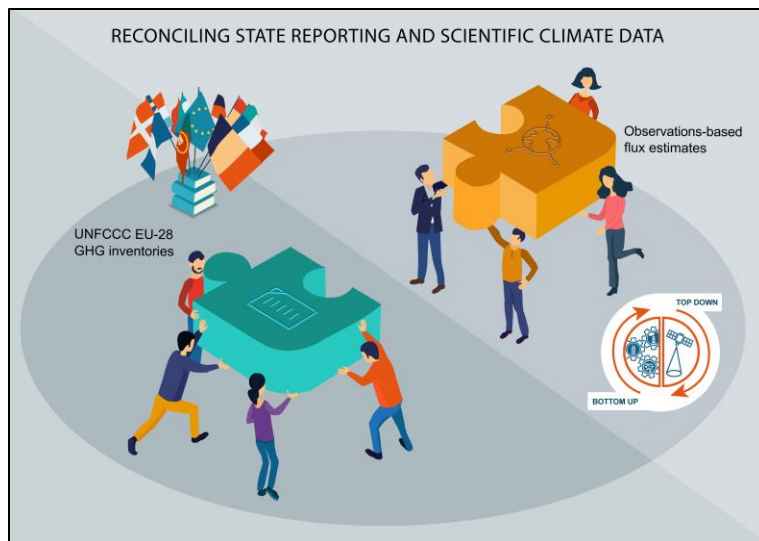
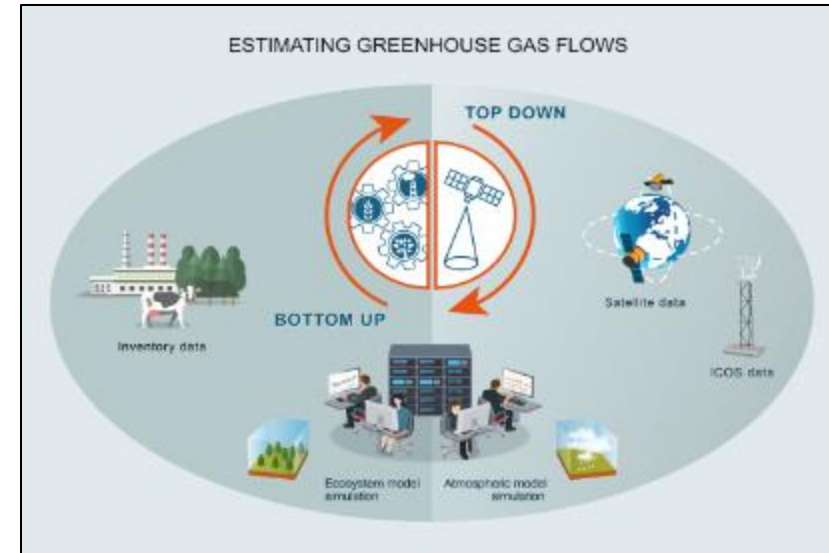
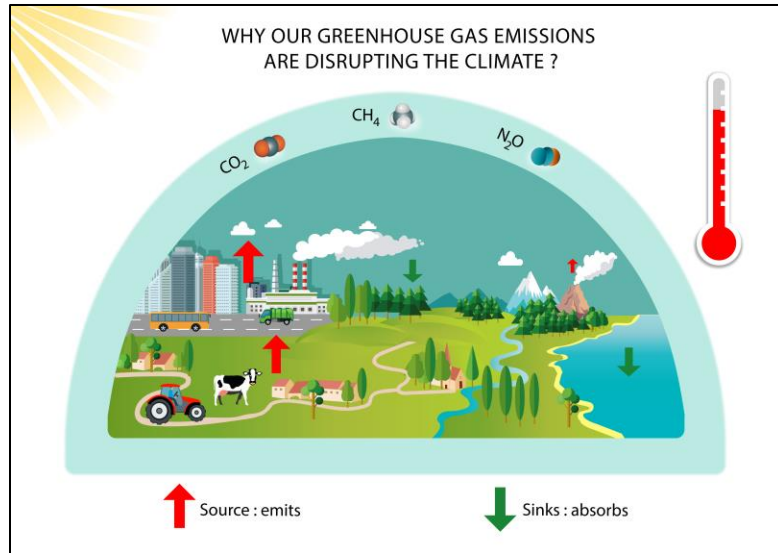
Consortium
Numbers
40 partners
Institutes

Work Content
Numbers
9 work-packages:
3-Verification
science,
1-Inventories
1-Synthesis &
Products
2-Policy relevance
& Intl program
input





VERIFY: Observation-based system for monitoring and verification of GHG



- Estimate CO₂ - CH₄ - N₂O GHG fluxes at European country scales from bottom up / top down observation-based approaches
- Compare **observation-based estimates** with the **reported fluxes** by each country to UNFCCC
- **Design a prototype GHG verification system**



NETWORKING MEETING

Day 2: Land based CO₂

Objective: interaction between national inventory agencies and the scientific community

“Alternative methods for inventory verification: opportunities and limits”

AGENDA OF THE MEETING

13:00	Opening	Chairs: Lucia Perugini, CMCC Dirk Günther, UBA Dessau
13:05	Introduction : emission inventory bottom-up data/model requirements	Marina Vitullo, ISPRA
13:20	VERIFY latest synthesis results	Han Dolman, VU Amsterdam
13:35	Synthesis of bottom-up and top-down methods for terrestrial carbon fluxes related to land use, land use change, and forestry	Matthew McGrath, LSCE
13:50	What open data tells us: Reconstructing six decades of global land use change	Karina Winkler, Wageningen University
14:05	Groundbased forest inventory data in European LULUCF reporting; the role of synchronized data across countries	Gert-Jan Nabuurs/ Martjan Schelhaas, Wageningen Env. Research
14:20	Introduction survey	Martin Herold, Wageningen University
14:35	Discussion	All
15:05	Wrap up	Giacomo Grassi, JRC
15:15	End of meeting	