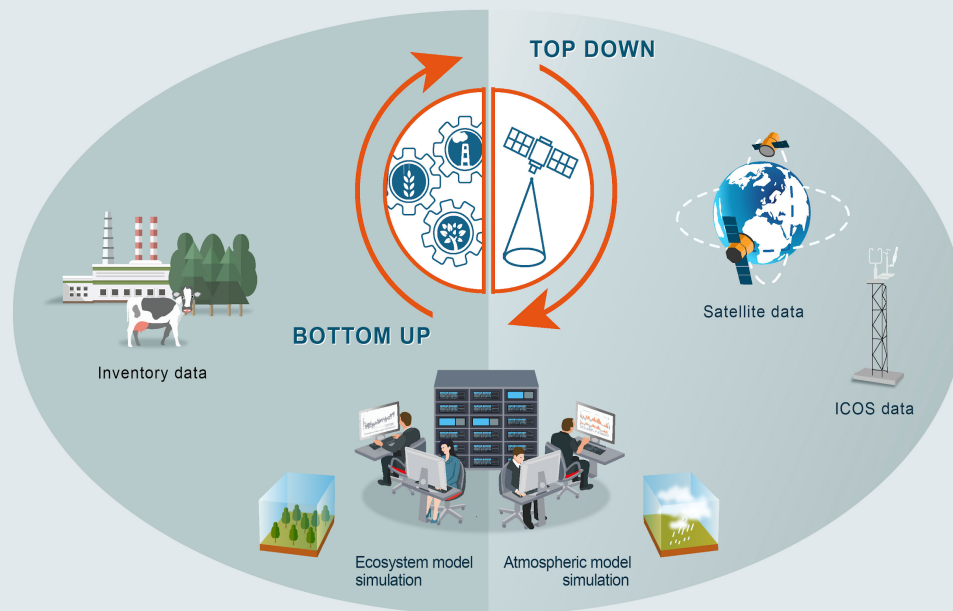


VERIFY 2 Networking Meeting

Synthesis of bottom-up and top-down methods for terrestrial carbon fluxes related to land use, land use change, and forestry – Matthew McGrath

Nov 12th, 2020

By Teleconference (GoToMeeting)



This project has received funding from the European Union's Horizon 2020 research and innovation programme under grant agreement No 776810



Contents

- Examples of country-specific plots
- Collaboration efforts between WP3 and WP1
- Possible future directions





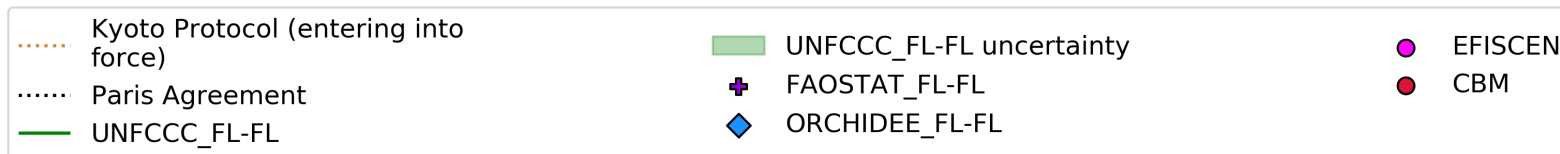
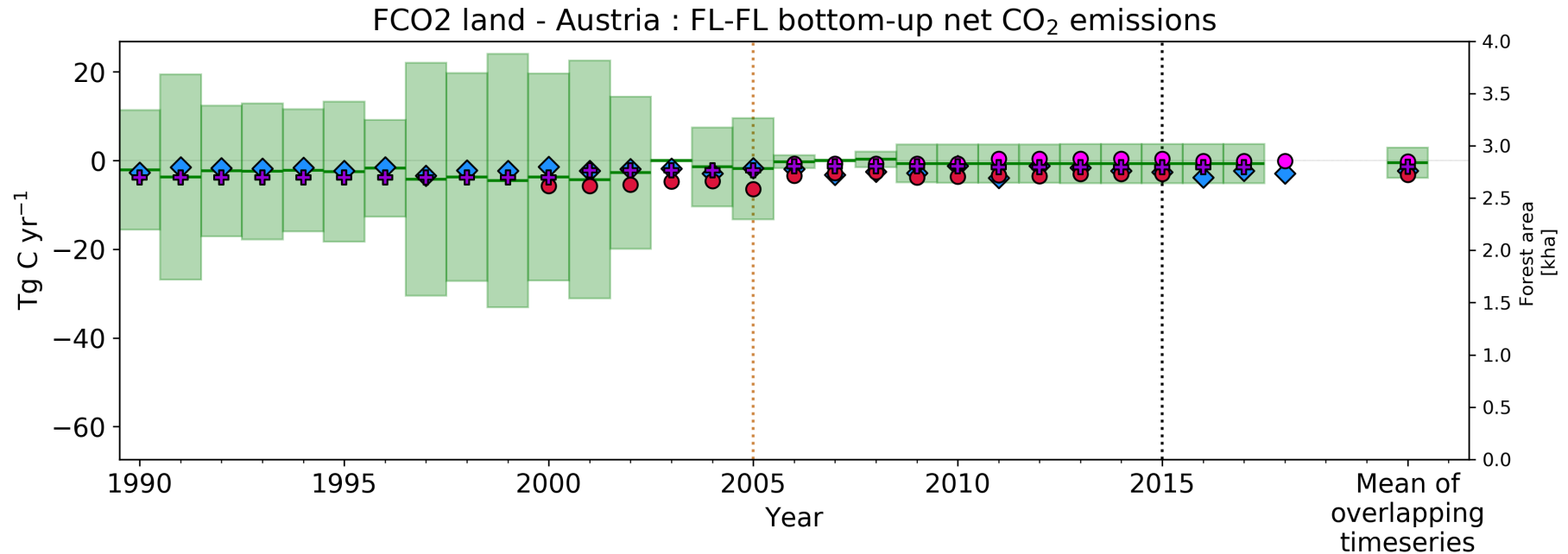
TYPES OF CO2LAND PLOTS

- Include information from UNFCCC, FAOSTAT, VERIFY bottom-up and top-down models, other projects, other models
- Plots available for 79 countries/groups of countries
- Loosely grouped into five categories
- More for a **scientific audience** than a policy audience at the moment
- NOTE: **Negative value is land sink**, and **positive value is land source**



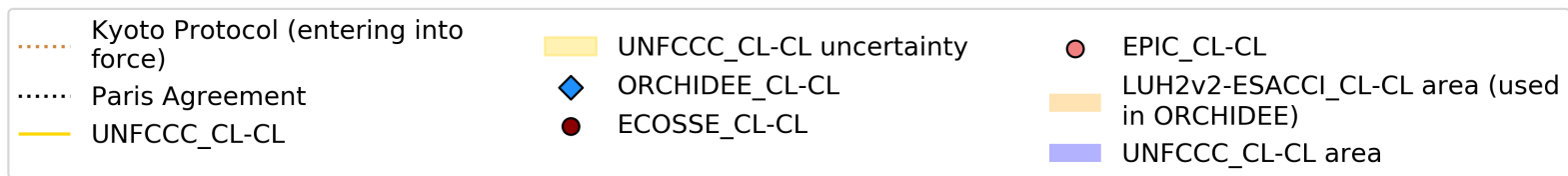
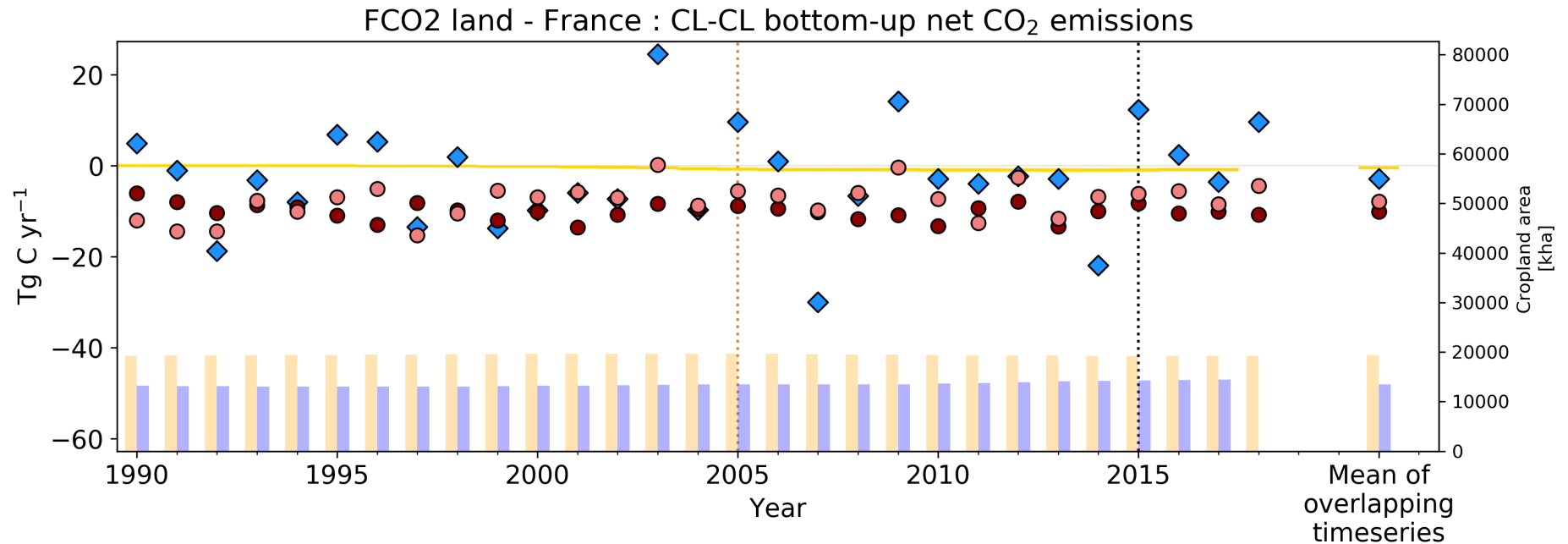


UNKNOWN ANSWER 1 (HIGH UNCERTAINTY)



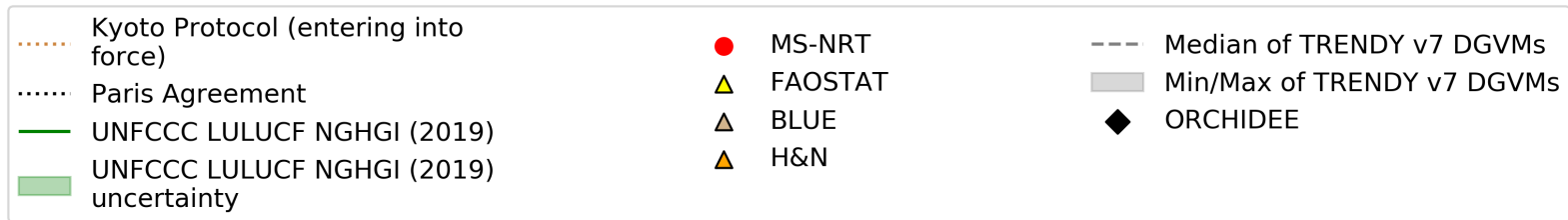
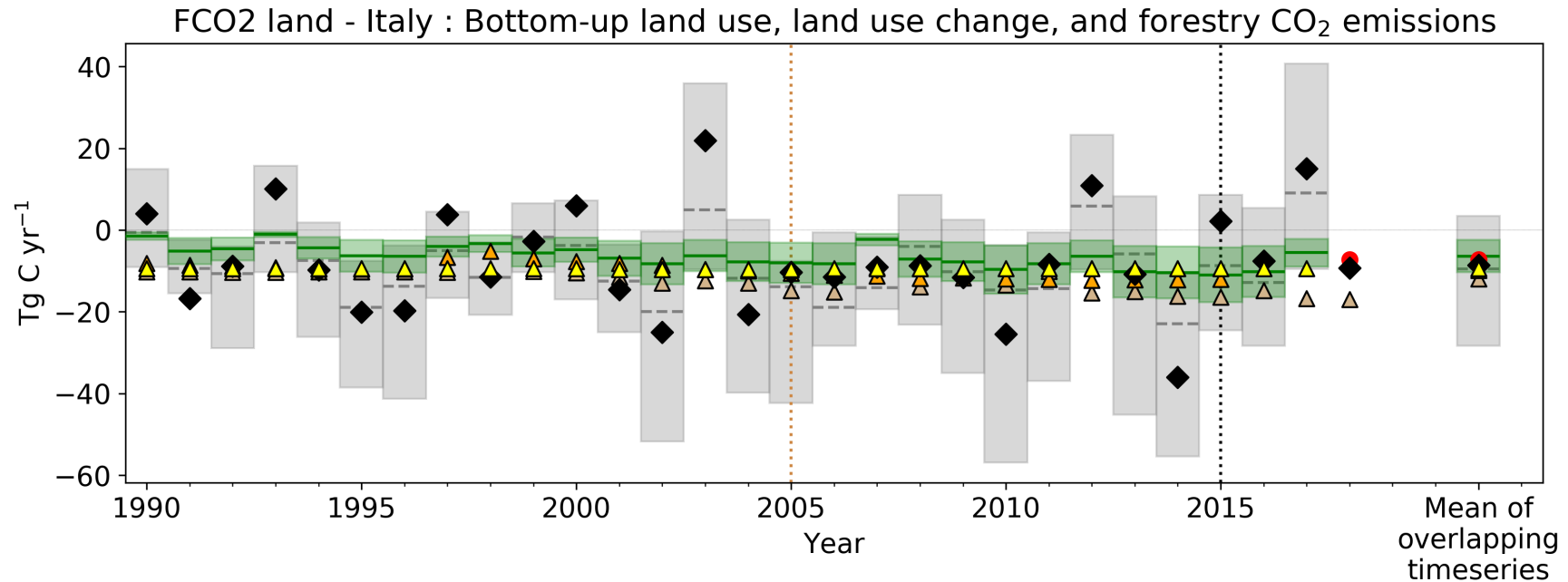


UNKNOWN ANSWER 1 (LOW UNCERTAINTY)



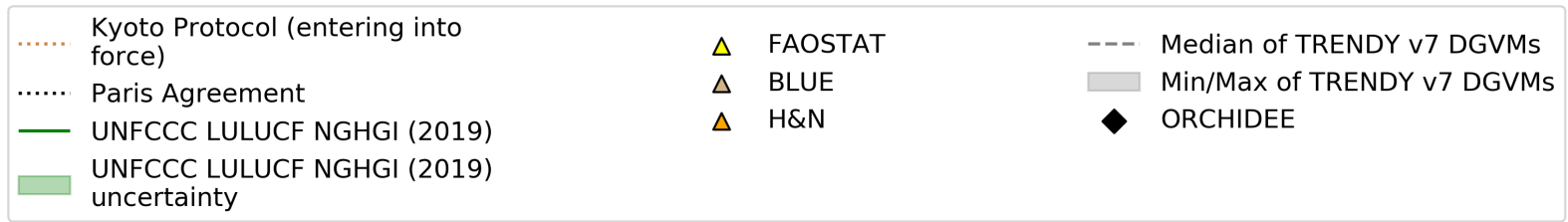
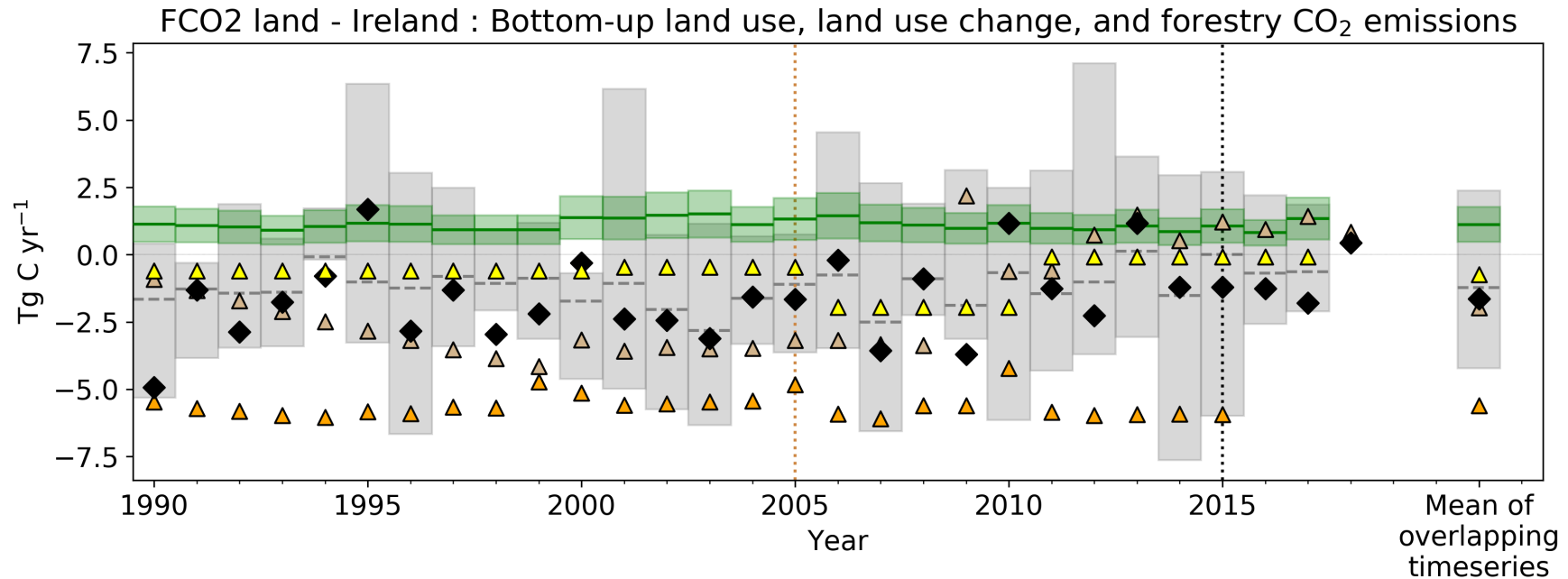


UNKNOWN ANSWER 2 (SOME AGREEMENT)

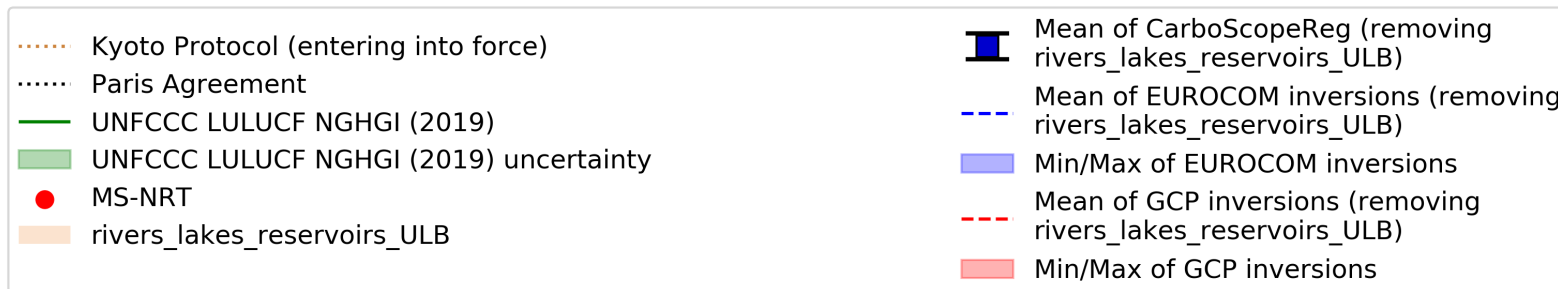
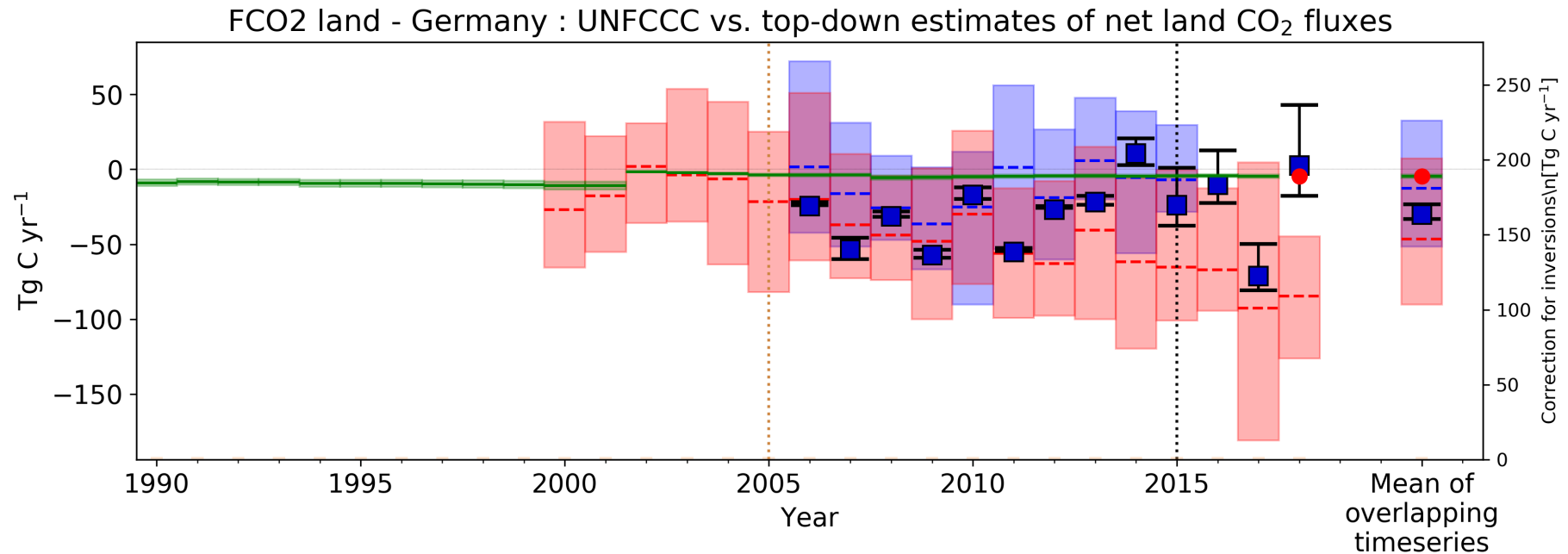




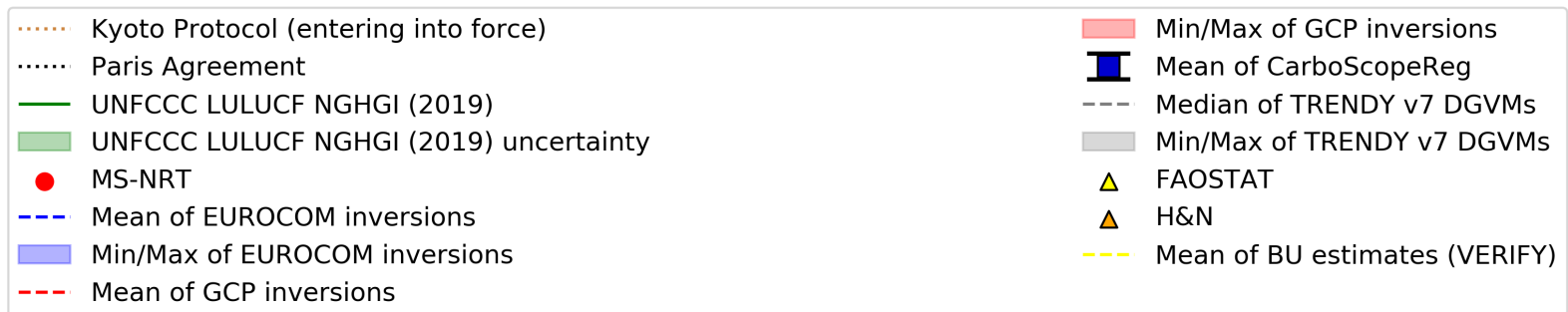
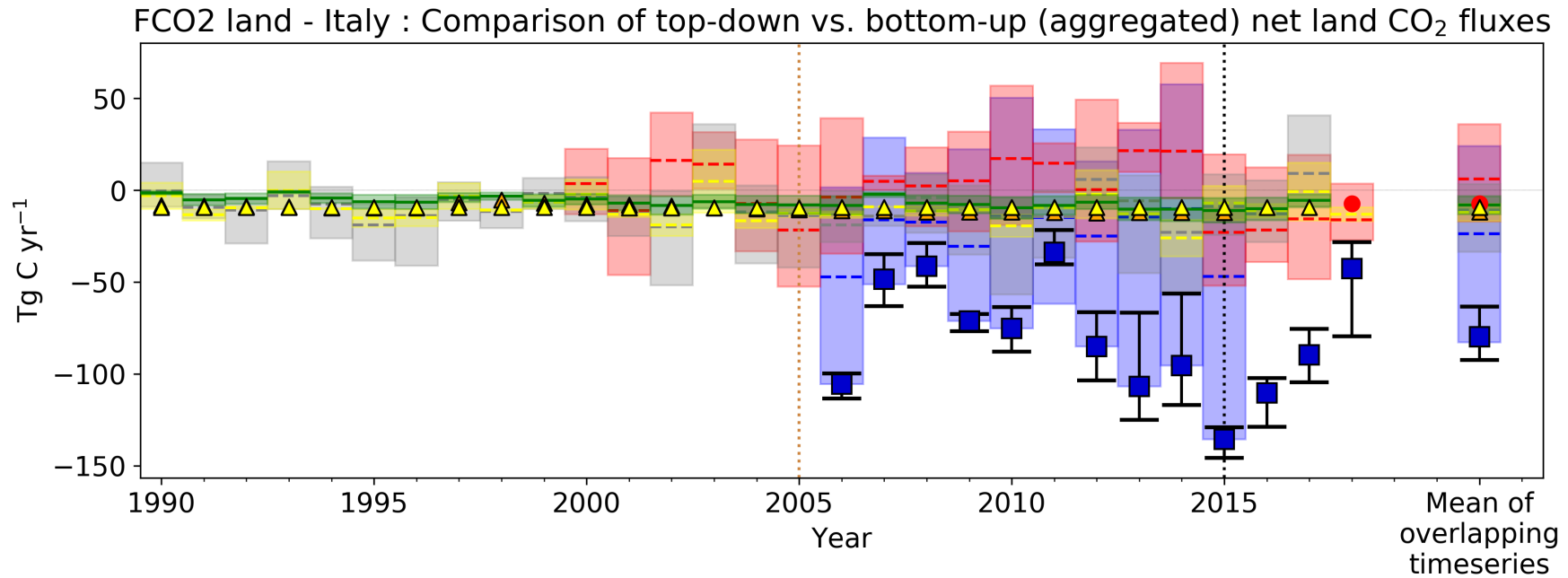
UNKNOWN ANSWER 2 (SOURCE vs SINK)



UNKNOWN ANSWER 3 (TRENDS)



UNKNOWN ANSWER 4 (OUTLIER)



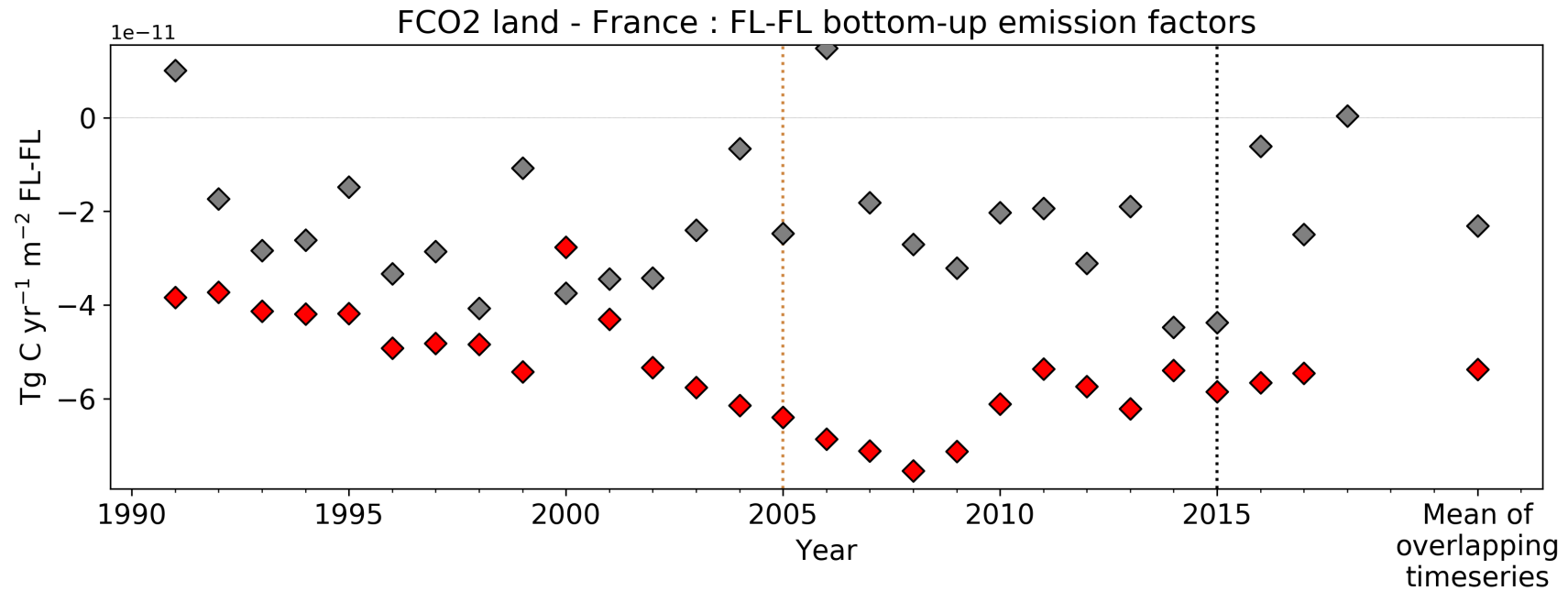


RAPPROCHEMENT

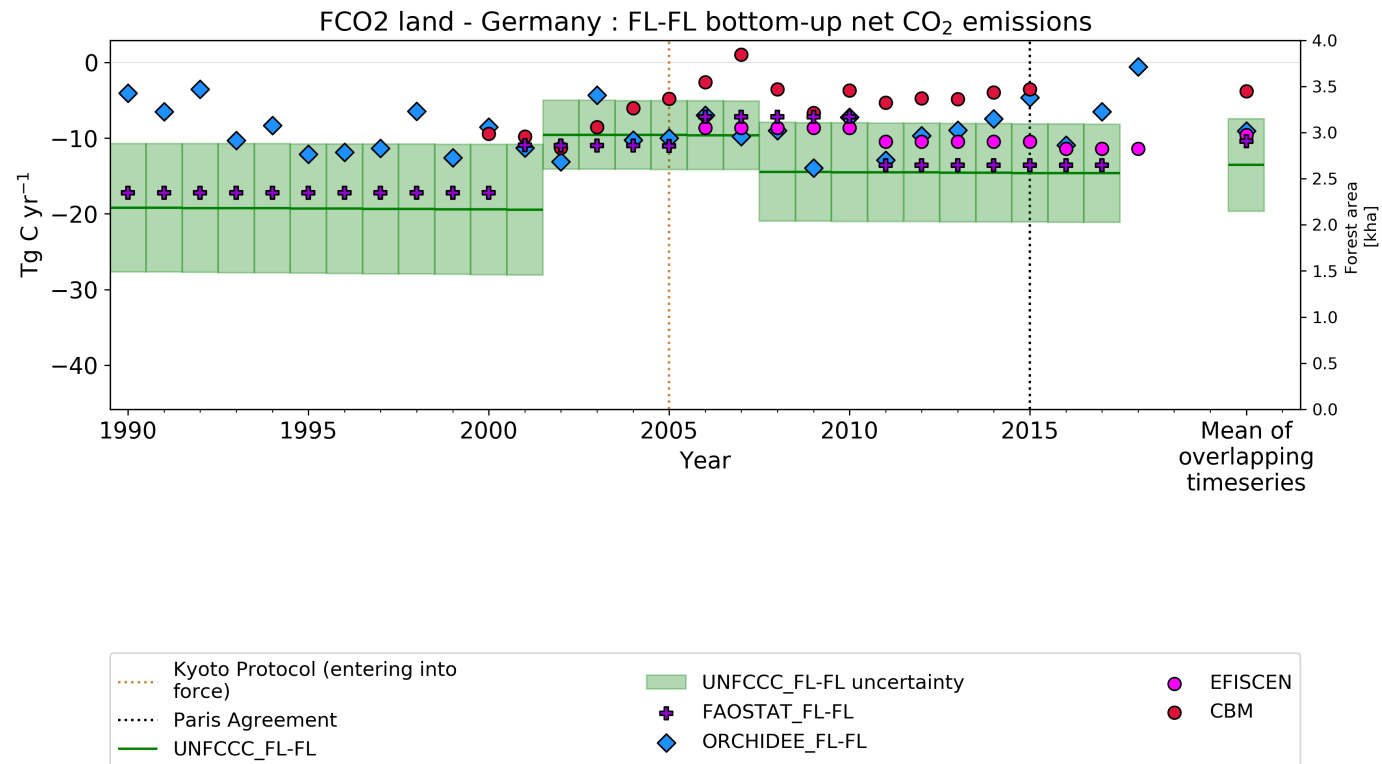
- WP3 efforts to provide useful products for inventory agencies
 - Biomass maps
 - Land cover/land use maps
 - Computing LULUCF emission factors using research models



RAPPROACHMENT



Spatial and temporal information





Thank you for your attention.



This project has received funding from the European Union's Horizon 2020 research and innovation programme under grant agreement No 776810